

HIDDEN RIVER MANUFACTURING KIT PRICE SHEET

Models in S scale

HRMLaserModels@GMail.com

I model kits from Wisconsin and mostly the North Central region where I live. If you are looking for a particular model and have plans, photos, dimensions, a sketch, a vision; e-mail me and we can discuss. If it would make a good kit, the price will be less than a one of a kind model.

Thanks for checking out my site. Always a work in progress.

I also offer to build and paint a kit for you if you don't trust your skill level. I will use the paint colors as close to the railroad color unless you want something different. I only use rattle-can spray paints so you must specify the colors per paint number on the cans if it not my standard colors. The price for building a kit is 2.5 times the price of the kit. So a \$100 kit would cost \$250 total for the kit and the build.

New list as of: November 7, 2022

(Kits were renumbered)



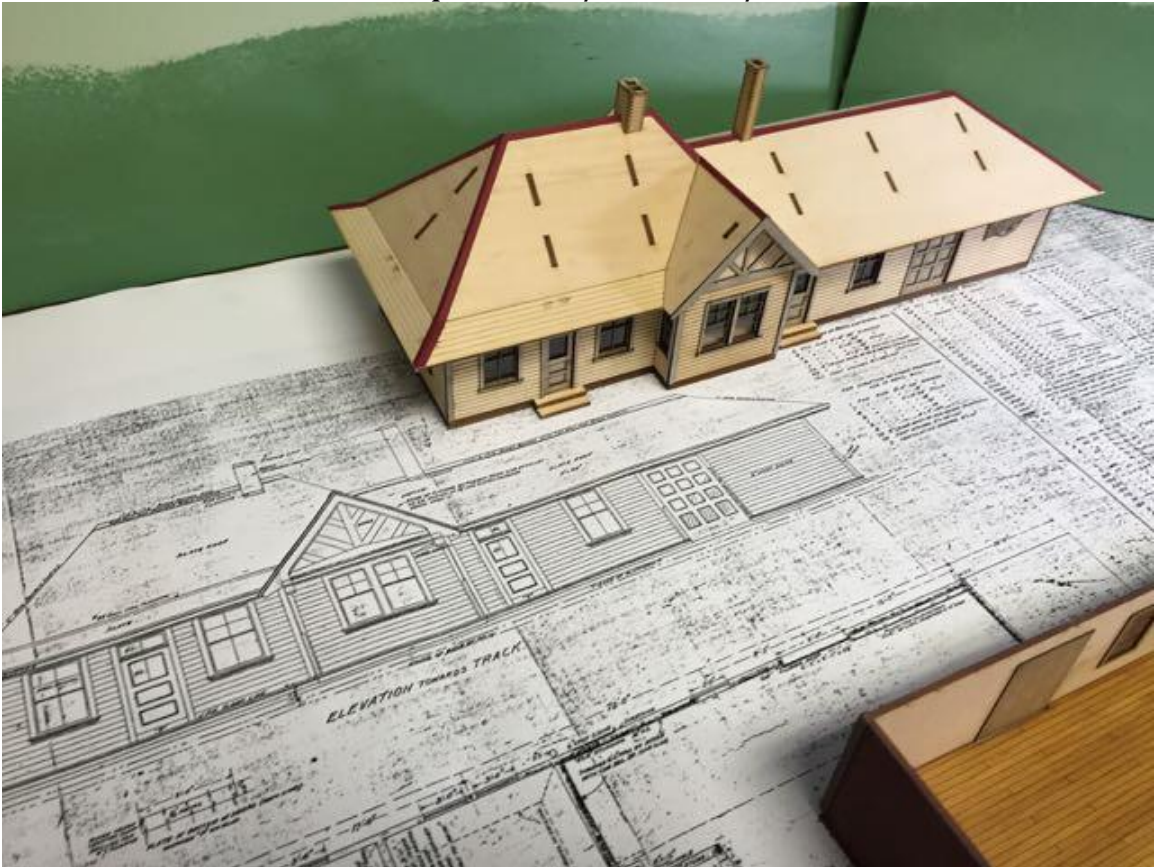
HRM-501 S Scale
C&NW RY
Cornell WI depot \$99.00
Footprint: 4-1/2" x 15"



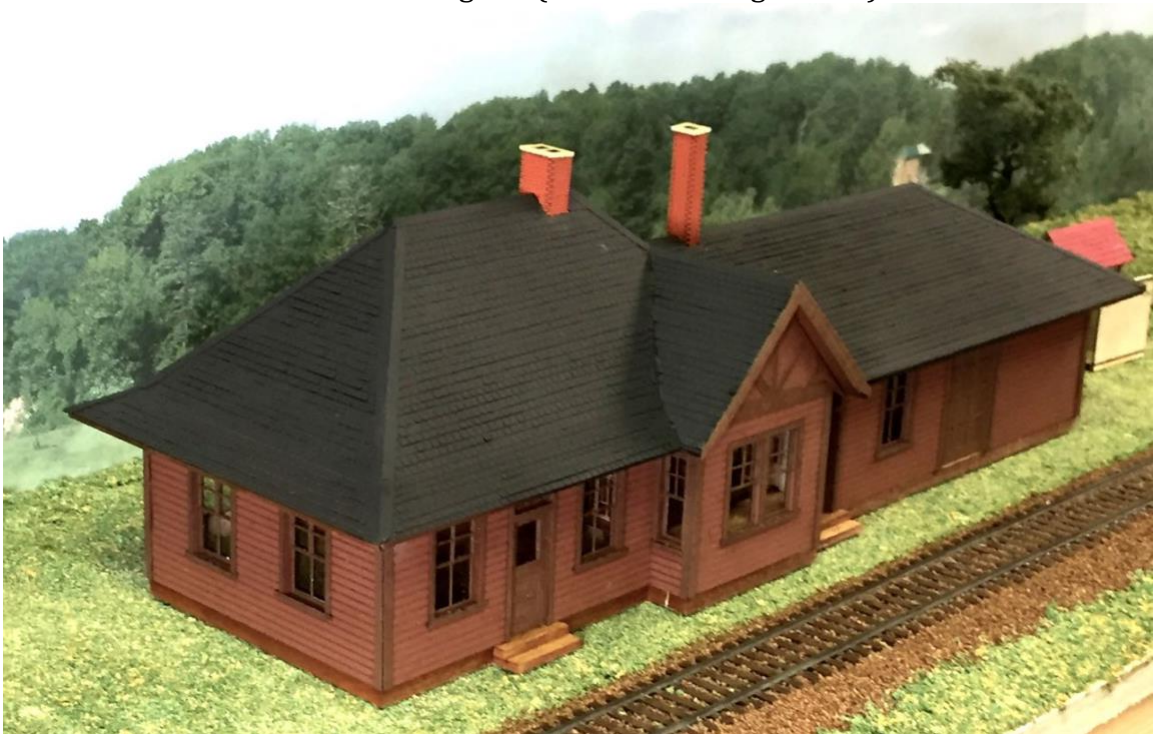
HRM-502 S Scale

Standard #2 C&NW Depot Belgium WI - \$103.99

Footprint: 4-1/2" x 13-1/2"



HRM-502 Belgium (Standard Configuration)



HRM-503
Oxford WI - \$103.99
Footprint: 4-1/4" x 13-1/2"
(MIRROR IMAGE OF HRM-502)



Oxford WI (Mirrored or Reversed Configuration)
(Outhouse sold separately)

HRM-504 **S Scale**
Milwaukee Road Schofield WI Depot \$82.99
Footprint: 4" x 8"





HRM-505 S Scale

T. W. Snow 25 ton Coaling Tower \$103.99

Footprint: 2-1/4" x 5-1/2" x 10-3/4" tall

Kits come with rolled roofing (not shown)





HO scale, S scale, & O scale 25 ton Cooling Towers





HRM-506 S Scale
MLS&W / C&NW
OOSTBURG WI - \$92.99
Footprint: 5-1/2" x 11-1/4"



Comes with Bay jig.



HRM-507 S Scale
MILW RD
Freight House \$72.99
Footprint: 5-1/4" x 8-1/4"





HRM-508 S Scale
C&NW RY
Crossing Guard House \$31.99
Footprint: 1-1/2" x 1-5/8"



HRM-509 S Scale

C&NW RY

Wiscona / Wyeville WI interlocking tower \$120.00

Footprint: 3" x 7"





HRM-510 S Scale
Milwaukee Road
New Lisbon WI depot \$350.00
Footprint: 7" x 35"

This is a scaled up version of my HO depot. I did this for a customer and decided to offer it to anyone else who might enjoy it.



HRM-511 **S Scale**
Standard C&NW Outhouse \$20.99
Footprint: 1-1/2" x 1-1/2"



HRM-512 **S Scale**
C&NW Coaling Facility \$32.99
Footprint: 3-1/2" x 10"
Seen here with its HO counterpart



HRM-513 S Scale
MILW Car Repair Shed \$32.99
Footprint: 3-1/4" x 5"



HRM-903s **S Scale**
Detail Parts - \$14.99 (\$2.00 S&H)

HRM-903s
S - SCALE DETAIL PARTS
1:64 scale

WAITING ROOM BENCH
DO ONE SIDE THEN ADD THE OTHER
6"-0" BENCH
GLUE
DIP EDGES IN A PUDDLE OF YELLOW GLUE OR USE A TOOTHPICK
4 PER KIT

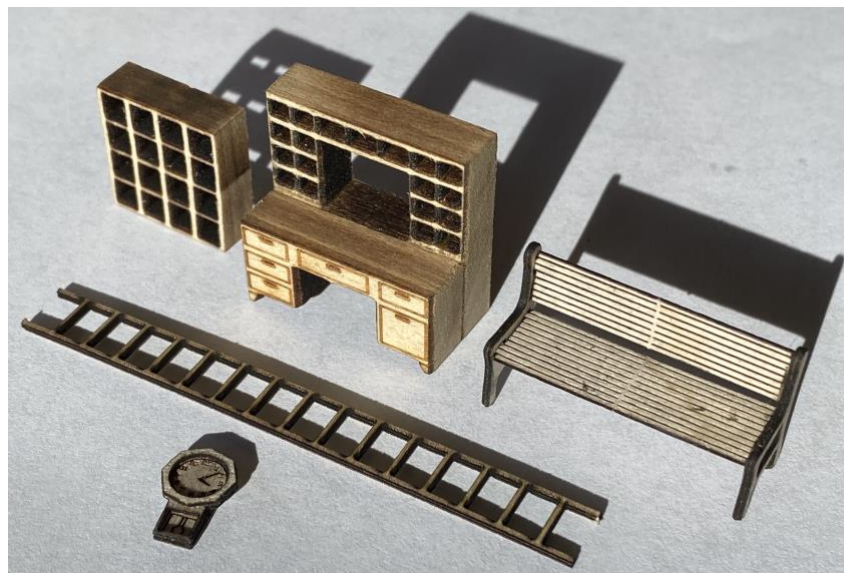
PIGEON HOLE CABINET
2 PER KIT

OFFICE DESK
GLUE

OFFICE CLOCK
ASSEMBLE CLOCK AS SHOWN
DOUBLE STICK BACKING

5 LADDERS

HRMLaserModels.com



HRM-514 S Scale
Milwaukee Road
Harshaw WI depot \$50.00
Footprint: 3-1/2" x 8"





Thank you for your interest,
D. Scott Peterson
HRMLaserModels@Gmail.com